



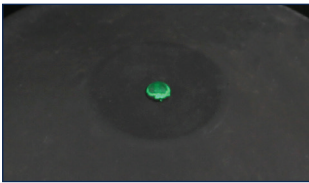
Pond De-Icer

Keep your pond healthy all winter long

**300
WATTS**

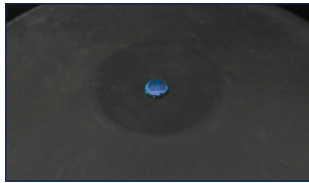
Energy Efficient

Heating element will only draw 300 watts when needed to keep a small area free of ice, keeping operating costs low



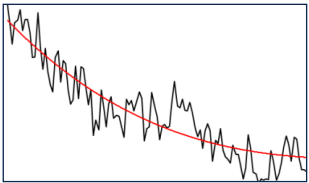
Indicator Light - Green

Shines green to show water temperature around de-icer is below freezing and De-Icer is in operation



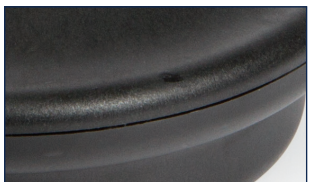
Indicator Light - Blue

De-Icer is in standby mode, de-icer will turn on again when water surrounding the de-icer cools the internal sensor again



Smart Heating

Designed to respond only to prolonged temperature changes, the De-Icer will ignore short-term temperature spikes



Durable construction

Constructed of high strength and high temperature PPS polymer



Pond De-Icer - PD300 / 73986

Pond De-Icer



ITEM	73986
MODEL	PD300
DESCRIPTION	Pond De-Icer
VOLTS	120
WATTS	300*
CORD LENGTH	20'
DIMENSIONS	8"W x 4"H
WARRANTY	1-year

- Pond de-icers maintain a small area free of ice, allowing oxygen in and toxic gases like carbon dioxide and methane out of pond water in winter
- Atlantic's Pond De-Icer saves energy by cycling on and off, maintaining an internal temperature of 200° under the worst conditions
- Constructed of high strength and high temperature PPS polymer for maximum durability
- Internal thermostat turns heater on just above freezing and off as water warms for fully automatic operation
- Indicator light shines blue to show the De-Icer is in standby mode when plugged in with water temperature above freezing
- Indicator light shines green to show water temperature is below freezing and De-Icer is in operation
- *Efficient heating element only draws 300 watts when needed to keep a small area free of ice and operating costs low