



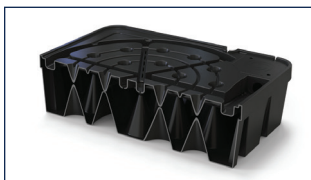
Fountain Basins

Redesigned for more stability and wider variety of plumbing options



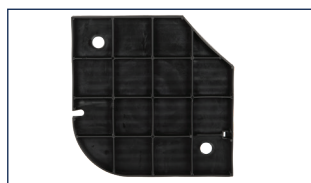
More Plumbing Options

Outer and center channels accommodate 1½" pipe and center pocket fits a 1½" 90° elbow to plumb a larger variety of toppers.



Increased Top Deck Stability

More cones directly connected to the top deck allow for a more stable surface for decorative toppers.



Reinforced Pump Chamber Lid

Injection molded pump chamber lid with cord notch can withstand foot traffic and keeps debris out of basin.



Triton 3-Way Diverter Pocket

FB3500 and FB4700 both now accept the Triton 3-Way Diverter (TR3WAY) to plumb up to 3 toppers with ¾" tubing.



FB3500 - 35" Fountain Basin



FB4700 - 47" Fountain Basin

Fountain Basins



74958



92803



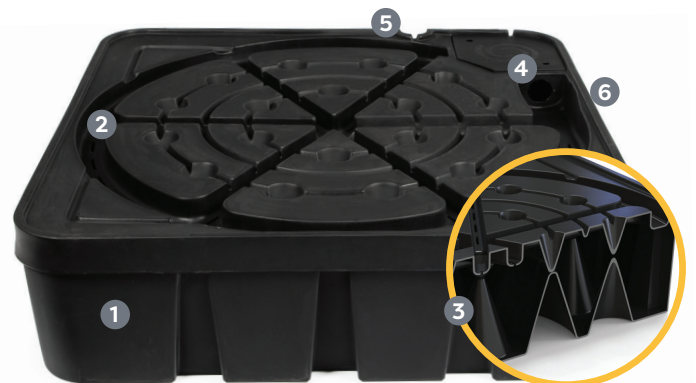
92802

- Fountain Basins support decorative features while concealing water reservoir, pump, plumbing and accessories
- Atlantic Fountain Basins are the easiest way for anyone to add a water feature to your landscape, ideal for both the beginners and the professional
- Easily installed, Basins may be set at, above or below grade in landscapes, hardscapes, poolscapes and interiors
- Recessed channels allow fast installation of 1" tubing, up to 1½" in the center channel (FB3500 & FB4700), without fear of kinking and crushing
- Square corners provide more usable area for decorative toppers
- Reinforced injection molded pump access panel provides support without warping or shifting (FB3500 & FB4700)

ITEM	74958	92803	92802
MODEL	FB2400	FB3500	FB4700
DESCRIPTION	24" Fountain Basin	35" Fountain Basin	47" Fountain Basin
DIMENSIONS	24"L x 24"W x 10"H	35"L x 35"W x 13"H	47"L x 47"W x 13"H
MAX PUMP FLOW	750 gph	2,000 gph	4,000 gph
PLUMBING SIZE	Up to ¾"	up to 1½"	up to 1½"
CAPACITY	20 gallons	42 gallons	75 gallons
MAX LOAD	200 lbs.	600 lbs.	1,200 lbs.
WARRANTY	Lifetime		
COMPARABLE ITEM	---	74962 - FB3200	74967 - FB4600

FOUNTAIN BASIN FEATURES:

1. One-piece rotomolded construction provides exceptional strength.
2. Built-in channels protect plumbing below the top of the basin, no crushing or kinking and fit 1½" elbows in the center channel (FB3500/FB4700).
3. Closely spaced cones, 19 in the FB4700 and 7 in the FB3500, connect directly to the top panel for greater stability.
4. Topside valve pocket holds adjustment valves and 3-Way Diverters to individually adjust flows above water level.
5. 1½" conduit recess in perimeter allow for clean installations in surrounding masonry without notching (FB3500 & FB4700).
6. Flat panel accommodates optional AF1000 Automatic Fill Valves.



92802 shown